

THE Tinui Anzac Walkway



Welcome to
The Tinui Anzac Walkway

Along the walkway you'll
experience spectacular views,
plantation forest, farmland
and native bush – peaking at
the Anzac Cross and trig point
at the top of the Tinui Taipo.



TINUI ANZAC HISTORY

Tinui was the first place in the world to have a formal celebration of Anzac Day. Back in 1914 there were over a thousand single men in the area, many volunteered for the Services and some lost their lives.

In 1916 Rev Basil Ashcroft held an Anzac ceremony at Tinui and erected a cross. The original has been replaced by a more modern cross. This is located in the original position on the hill overlooking the village.

The popularity of the Anzac Day ceremony at Tinui has been growing steadily with hundreds in attendance in recent years. There are less than 25 permanent residents at Tinui.

The Tinui Parish Anzac Trust was established in 2010 and is a registered charitable trust. The aim of the Trust is to preserve the sanctity of the Tinui Anzac heritage, maintain full access to the Anzac Cross, maintain the monument and associated areas and to commemorate Anzac Day annually with a full service.



THIS IS A WORKING FOREST AND FARM

Please observe the following:

- Pedestrians only
- No dogs
- Keep to marked trail
- Use stiles; leave gates as you find them
- No fires; no smoking
- No firearms or hunting
- Leave no litter

**THE WALKWAY IS OPEN TO THE PUBLIC
FROM NOVEMBER 1ST TO APRIL 25TH**

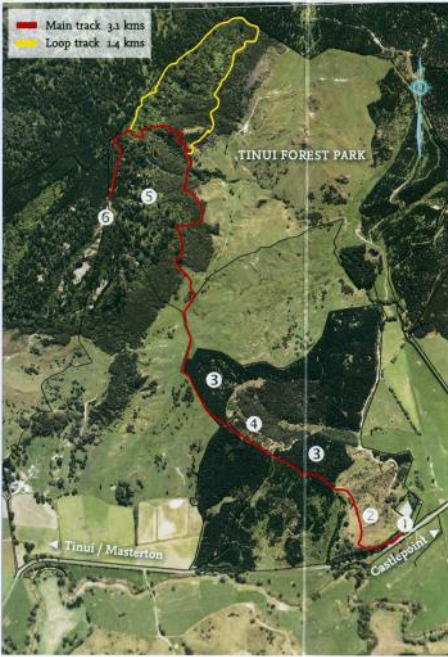
From time to time we may need to close the walkway, e.g. if fire risk is high or forestry operations are underway.

The walkway starts adjacent to the Tinui Cemetery. Take the Castlepoint Road from the Tinui Café and Bar and look for the AA sign to the cemetery – about 2 km from Tinui. Car parking is available at the start of the walkway.

The walk to the Anzac Cross takes well over an hour one-way and includes a steep climb through native bush. You will need strong footwear. There is no drinking water or toilet on the walkway.

The Tinui Anzac Walkway has been developed by the Tinui Parish Anzac Trust in collaboration with Tinui Forest Park Ltd, M & L Hodgins, and the NZ Walking Access Commission.

Call into the Tinui Café and Bar
for further information about
the walkway and the Tinui Anzac story.



- 6
 Tinui Anzac Cross and Trig Point
- 5
 QE II covenant – regenerating native bush
- 4
 Eucalypts and cypresses
- 3
 Radiata pine
- 2
 Native species
- 1
 Car park – adjacent to the Tinui Cemetery